

2017 AIR QUALITY ANNUAL REPORT



2017 SNAPSHOT

Air quality in 2017 was similar to 2015 and 2016. Federal air quality standards were exceeded only a few times and most were due to wildfires. Wind blown dust continued to have significant impacts on air quality in the South County.



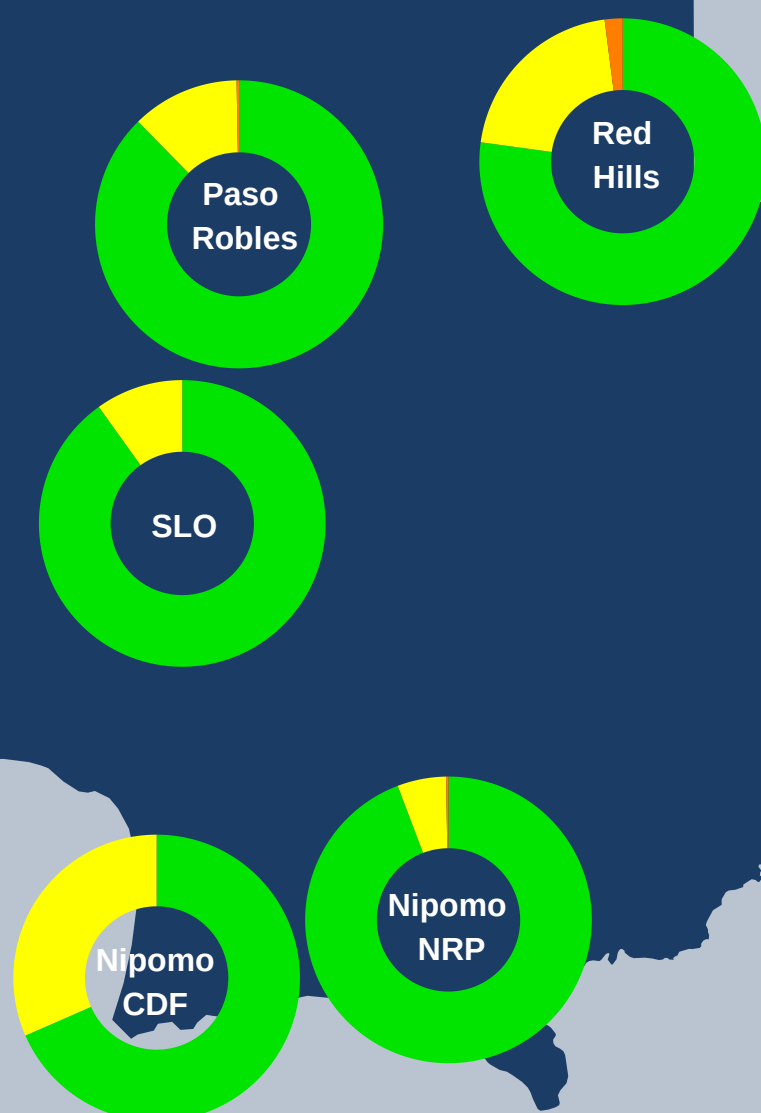
Read our full report at:
<https://bit.ly/2QKYc0t>

AIR QUALITY AT A GLANCE

SLO County APCD has monitoring stations across the county measuring ozone and particulate matter. That data, in addition to other resources, are used to develop the community Air Quality Index (AQI) values, which tells you how clean or how polluted your air is and what health effects you may experience within a few hours or days after breathing polluted air.

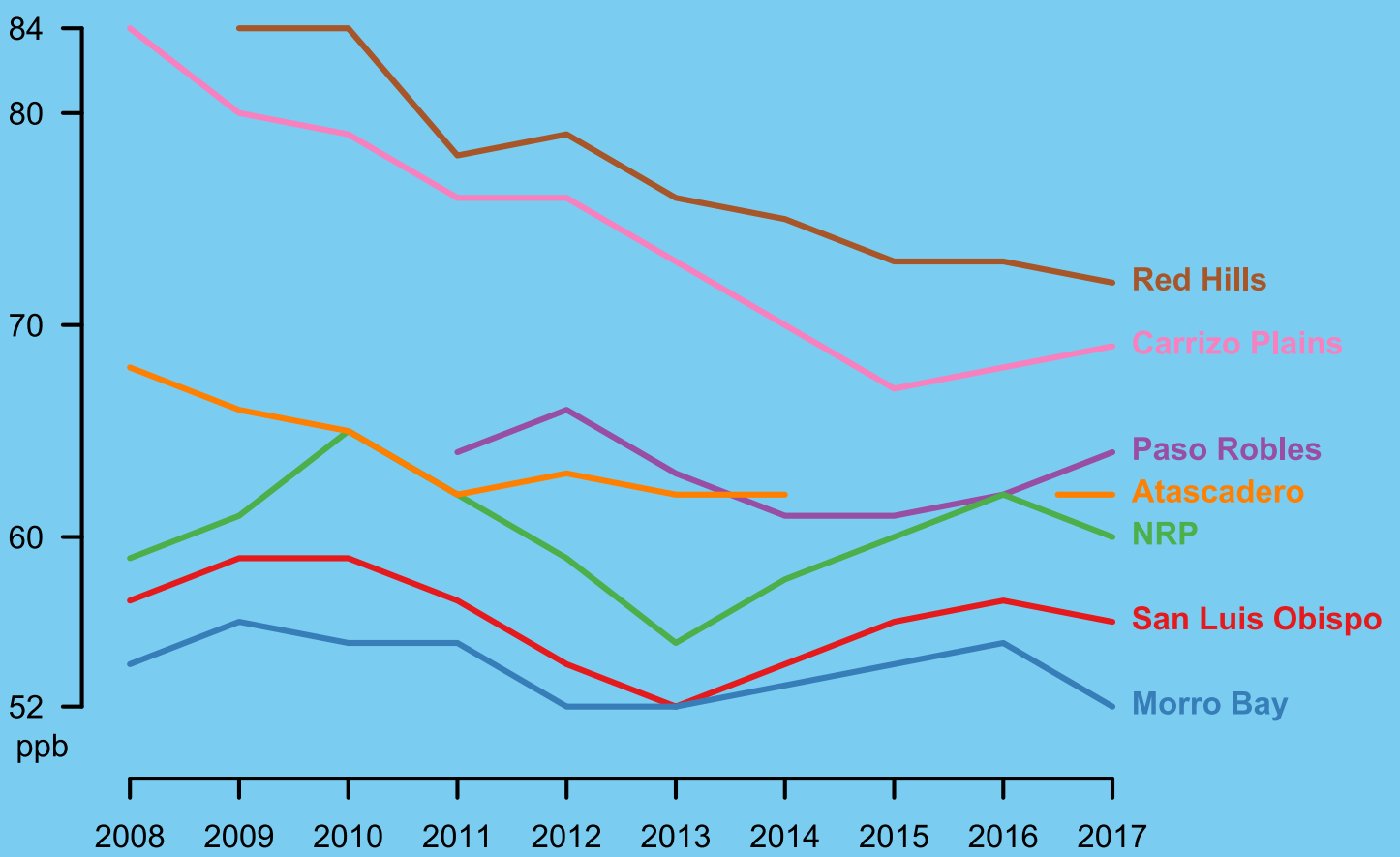
The range of AQI values is 0 to 500 - the higher the value, the greater the level of air pollution and greater the health concern.

GOOD VS MODERATE VS UNHEALTHY FOR SENSITIVE RECEPTORS



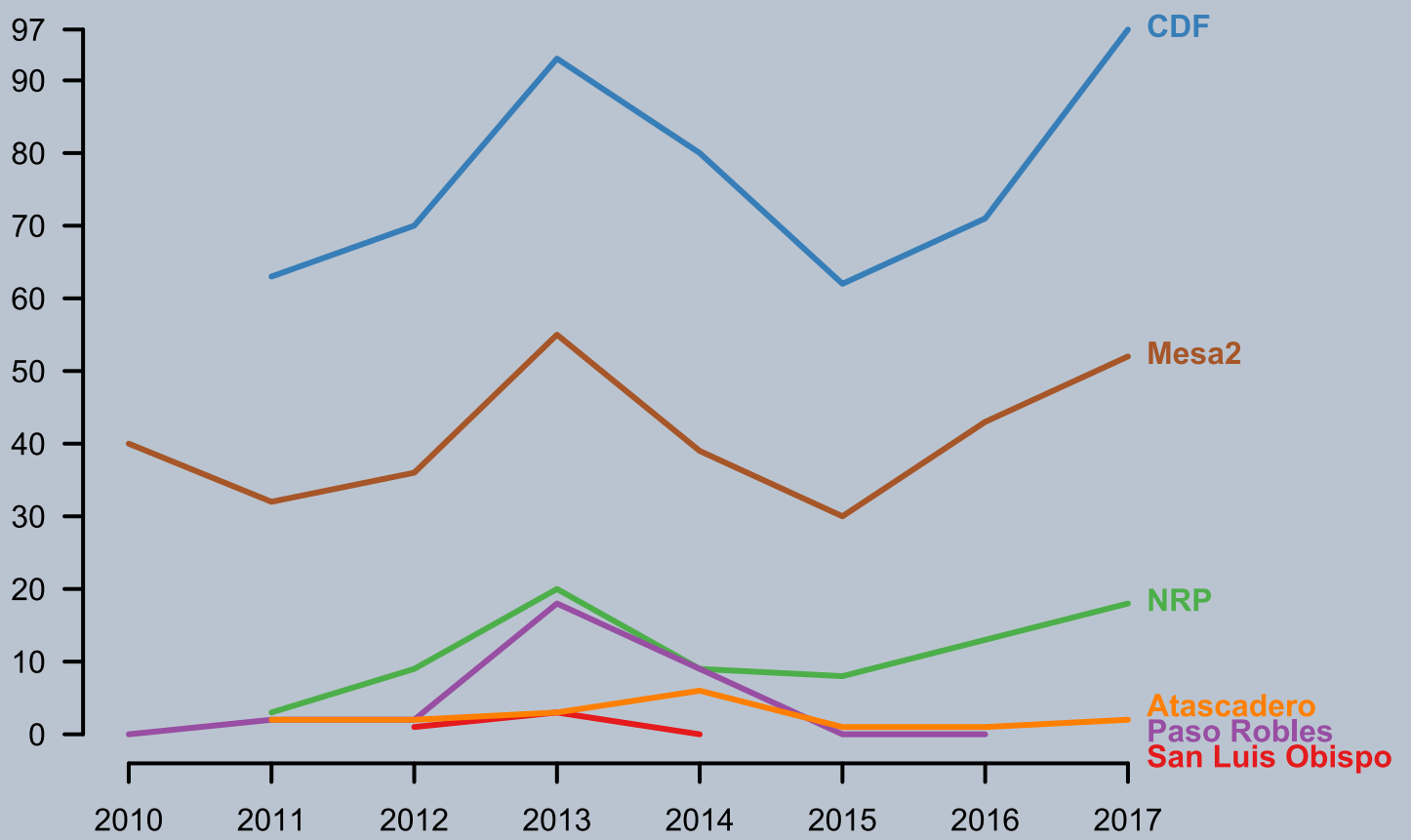
OZONE TRENDS

As you can see by the graphic, ozone concentrations over the past 9 years have been steadily declining across SLO County.



PARTICULATE MATTER TRENDS

Over the past 7 years, particulate matter levels across SLO County, with the exception of the monitoring locations on the Nipomo Mesa, have seen a decline in levels. SLO County APCD continues to work on mitigation efforts to reduce the high PM levels experienced on the Nipomo Mesa.



Find out more about your local air quality by signing up to receive text notifications with our AirAware program!

SLOCleanAir.org/air-quality-alerts

